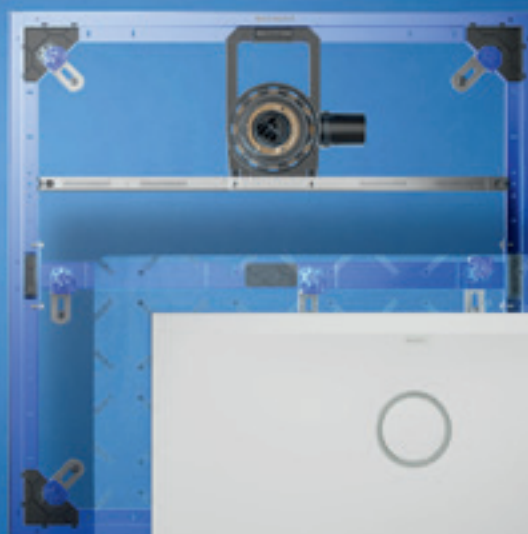
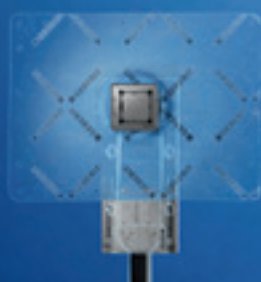
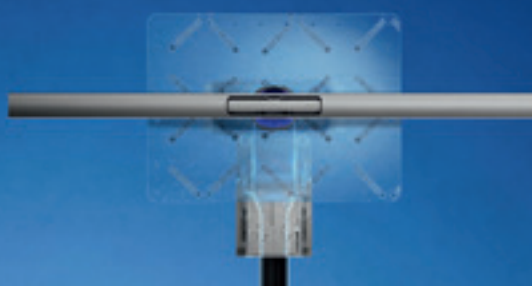
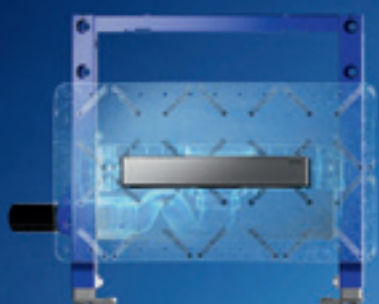


GEBERIT SHOWER SOLUTIONS

# FOR ALL YOUR SHOWER NEEDS



**KNOW  
HOW**  
INSTALLED



# MASTERING WATER

## BEHIND THE WALL

### SUPPLY



Resist pressure and corrosion with:

**Geberit Mepla**

### INSTALLATION AND FLUSH



Efficient flush and quiet fill with:

**Geberit Type 212 flush valve and Geberit Type 383 fill valve**

### DRAINAGE



High discharge rate with:

**GeberitSilent-db20 technology**

SUPPLY SYSTEMS

INSTALLATION AND  
FLUSHING SYSTEMS

WC

WASHBASIN  
AREA

SHOWER

DRAINAGE SYSTEMS

## IN FRONT OF THE WALL

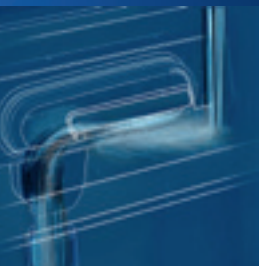
### WC



Powerful flush with:

**Geberit WCs with TurboFlush technology**

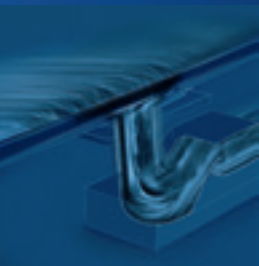
### WASHBASIN AREA



Backpressure prevention drain with:

**GeberitONE washbasin with CleanDrain**

### SHOWER



Safe drainage with:

**Geberit CleanLineshower channel**

The products mentioned are only representative examples of each product category.



# CONTENTS

08

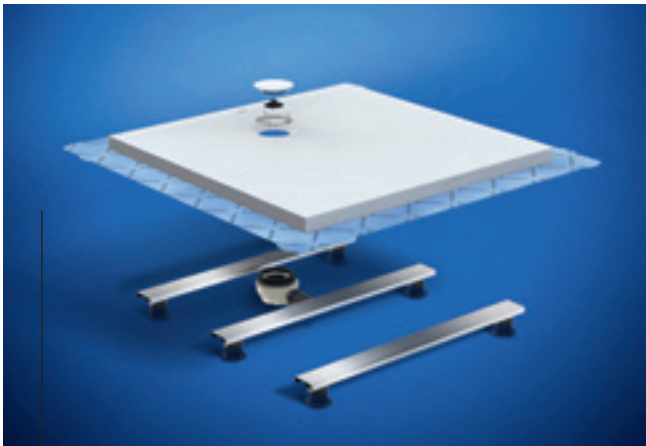
**GEBERIT CLEANFLOOR30**  
Elegant and functional.



NEW



NEW



12

**GEBERIT OLONA**  
When form meets function.

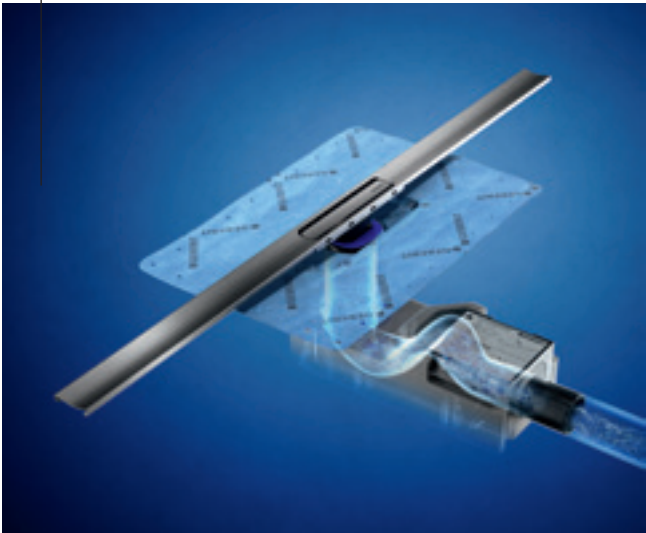
18

**GEBERIT CLEANLINE30**  
Modern and functional down to the finest detail.



26

**GEBERIT CLEANLINE INSTALLATION SET**  
Flexible installation, secure sealing.



32

**GEBERIT CLEANPOINT**  
Minimalist with high discharge rate.

30

**GEBERIT CLEANWALL**  
Consistently floor-even.



36

**GEBERIT BATHTUBS**  
Relaxation in all its beauty.





# FLOOR-EVEN SHOWER SURFACES

The shower is more than just somewhere to get clean – it also helps you feel refreshed and gives you time to think. So your shower should stand out both in terms of function and look. Floor-even shower surfaces are the centrepiece of any wellness bathroom.



GEBERIT CLEANFLOOR30

# ELEGANT AND FUNCTIONAL

The floor-even Geberit CleanFloor30 shower surface is simple to install, durable and easy to clean, combining an attractive design with smart details that make everyday life noticeably easier.



Consistent interior design



Secure footing thanks to Class B slip resistance



Silky-smooth surface that is pleasant and warm to the touch



Simple cleaning and care



Meets sound insulation standards



↑ The shower surface is finished with an antislip mineral composite material for maximum safety.



↑ The integrated comb insert prevents clogging and can be removed for cleaning with a single hand movement.

The Geberit CleanFloor30 shower surface impresses with its elegant design made of a durable mineral composite material. The silky-smooth surface feels pleasantly warm and allows water to bounce off gently. The completely homogenous material ensures stability, durability and slip resistance. The shower surface is available in classic white, grey and graphite colours and a wide range of sizes.

- Stability and safety thanks to durable mineral composite material
- Warm to the touch and antislip
- Hygienic and easy-to-clean surface
- Available in a range of sizes

## SURFACES AND COVER COLOURS



White matt



Grey matt



Graphite matt

## SIZES

120 x 120	100 x 160	90 x 180	80 x 170	75 x 170
100 x 100	100 x 150	90 x 170	80 x 160	
90 x 90	100 x 140	90 x 160	80 x 150	
80 x 80		90 x 150	80 x 140	
	100 x 120	90 x 140		
	100 x 110	90 x 120	80 x 120	75 x 90
		90 x 110	80 x 110	
		90 x 100	80 x 100	
			80 x 90	

Sizes in cm



# THE ORIGINAL NOW HORIZONTAL

The Duofix installation frame for WCs and washbasin areas offers the same well-known advantages of the original when used for showers, including quick and easy installation and a stable and precise underlay.

**SLIP RESISTANCE**  
Class B integrated as standard solution.

**LEAK-PROOF**  
Factory-sealed and clear separation of trades.

**EASY INSTALLATION**  
3x faster than conventional installation systems.

**STABILITY**  
Precise alignment of the frame and high-quality mineral casting.



↑  
The factory-prefabricated Duofix installation frame for showers offers the same benefits as the original for WC systems and washbasin areas.



↑  
The factory-set sealing fleece saves time and provides a secure seal.

Shower surface and installation frame come together in a system designed to work in perfect harmony. The installation frame, which is prefabricated at the factory, provides a stable and precise base that allows plumbers to install shower surfaces quickly and securely. And that's not all, because the installation frame offers flexibility and can be rotated 180 degrees to be used with steel trays. The sealing fleece also comes prefitted from the factory, not only providing a highly reliable and secure seal but also saving time and minimising interactions with other trades.








↑  
Separation of trades helps avoid confusion on the building site.

- Quick and easy installation
- Stable and secure thanks to numerous contact points and central foot support
- Factory-set sealing
- Suitable as an installation system for CleanFloor shower surfaces and steel trays.



GEBERIT OLONA SHOWER SURFACE

# QUALITY YOU CAN FEEL

-  Consistent room design
-  Secure footing with top-tier Class C slip resistance
-  Silky-smooth surface that is pleasant and warm to the touch
-  Simple cleaning and care
-  Surface-even or lay-on installation possible



Impressively elegant, the Geberit Olona shower surface boasts a noticeably strong design and white matt finish. It is made from mineral composite material and finished with gelcoat to ensure secure footing. Available in many different formats, it provides flexible design options for shower areas.



↑  
White matt aesthetic: the shower surface is available in various formats to meet every design requirement.

## SURFACES AND COVER COLOURS



Surface: Matt white Cover: Matt white with chrome ring



Surface: white matt Cover: Matt black with chrome ring

- Floor-even shower surface made of mineral composite material
- White matt surface
- Class C slip resistance
- Available in 26 different formats



## SIZES

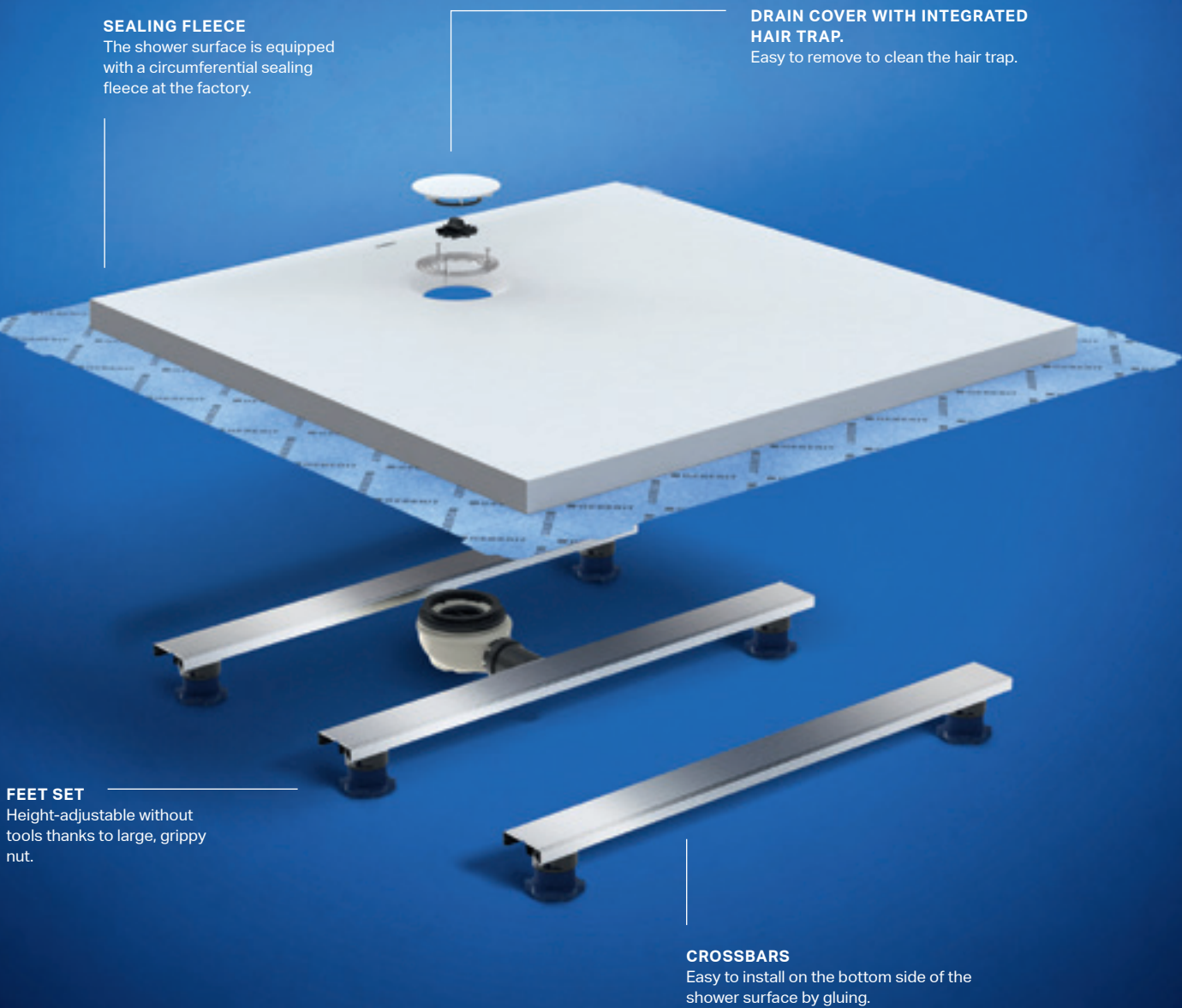
120 x 120	100 x 160	90 x 180	80 x 170	75 x 170
100 x 100	100 x 140	90 x 170	80 x 160	
90 x 90	100 x 120	90 x 160	80 x 140	
80 x 80		90 x 140	80 x 120	
		90 x 120	80 x 100	
		90 x 100		75 x 90

Sizes in cm



# TOOL-FREE INSTALLATION AND HEIGHT ADJUSTMENT

The cleverly designed installation system for Olona, Sestra and Melua shower surfaces saves time during installation, provides more flexibility and makes it easy to seal everything.



The Geberit feet set can be installed without tools and positioned quickly and accurately to suit any requirements. You can adjust the height of the feet as required, making it easy to compensate dimensional tolerances without needing to use any extra components or material. The factory-set sealing fleece makes it easier to integrate shower surfaces into the sealing level.

- Installation without wet construction
- Tool-free installation
- Easy to adhere to resin stone shower surfaces
- Versatile product design for bathroom and sanitary installation
- Available in two sizes: height adjustment from 6 to 12 cm or 9 to 21 cm

## SIMPLE TOOL-FREE INSTALLATION



↑  
The supporting crossbars are equipped with an adhesive surface.



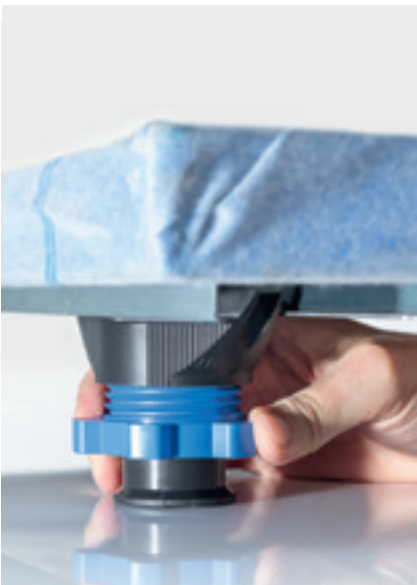
↑  
After removing the protective foil, press the rails firmly in place to bond them to the underside of the shower surface.



↑  
Simply push the set of feet into the rail and fix in place by turning.

→  
Turn the easy-to-grip blue adjusting screw to adjust the height of the feet to suit the surface without any tools.

## SIZES







# SHOWER CHANNELS




Geberit CleanLine shower channels combine an outstanding look with function and hygiene, making bathrooms feel more spacious and creating an almost completely seamless floor surface. A range of designs, models and sizes gives you the freedom to create unique looks to suit any bathroom.



GEBERIT CLEANLINE30

# MODERN AND FUNCTIONAL DOWN TO THE FINEST DETAIL

Geberit CleanLine30 shower channels are sleek, functional and sophisticated, down to the finest detail. Made of stainless steel, they combine modern design with maximum everyday practicality. The narrow shower channel fits elegantly into any shower surface – either mounted back-to-wall or in-centre.

-  Classic brushed stainless steel or on-trend black
-  Floor-even access for completely tiled shower areas
-  No hidden channels to minimise dirt and bacteria deposits. The removable comb insert makes the drain easy to keep clean

CleanLine30 is available in four lengths from 90 to 160 cm and can be shortened as required. Whether for a new building or renovation, the shower channel comes with two water seal depths, making it suitable for use in any shower area. The shower channel is incredibly easy to keep clean thanks to the floating waste plug with integrated comb insert. The sealing membrane, which is premounted at the factory, ensures a clear separation of trades and makes installation quick and simple.



↑  
Can be customised to the width of the showering area and is also suitable for large tile sizes.

- Sleek, functional design with clean lines
- Easy to clean thanks to integrated comb insert
- Two colour options: brushed stainless steel or black with anti-fingerprint coating
- Premounted sealing for quick installation
- Available in four lengths that can be cut to length as required

SIZES

4,3 × 30 – 160		
4,3 × 30 – 130		
4,3 × 30 – 110		
4,3 × 30 – 90		

Dimensions in cm



↑  
The comb insert, which is easily removable by pressing a button and does not require any additional tools, catches dirt and hair and is easy to clean.



↑  
Curved, solid channel profile.

Profile width of 43 mm.  
↓



COLOURS



Stainless steel



Black with anti-fingerprint coating



GEBERIT CLEANLINE50

# MINIMALIST AESTHETIC IN PERFECT HARMONY



Classic look in brushed stainless steel or contemporary style in black chrome



Floor-even access for completely tiled shower areas



Tiled shower areas

Geberit CleanLine50 is the slimmest member of the Geberit CleanLine family with a modern, minimalist design and width of just 3 cm. Its integrated slope and new triangular contour in the channel cross-section ensure rapid water drainage.



red dot winner 2023

No hidden channels to minimise dirt and bacteria deposits. The removable comb insert makes the drain easy to keep clean.

Just like the other shower channels in this bathroom series, the Geberit CleanLine50 provides an innovative and easy-to-clean water guide to the central drain. Water is openly channelled to the drain via a collector profile. There are no hidden areas, ensuring that dirt and unpleasant odours cannot accumulate. An anti-fingerprint coating makes cleaning even easier: simply wipe the profile down to keep everything clean.

- Extremely slim design
- Triangular profile and integrated slope for fast water drainage
- Anti-fingerprint coating

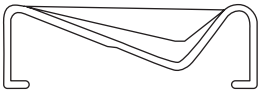


↑  
Can be customised to the width of the showering area and is also suitable for large tile sizes.



↑  
The comb insert minimises clogging and is easy to remove and clean.

↓  
Triangular, solid channel profile for better water drainage.



## SIZES

3,0 x 30 – 130		
3,0 x 30 – 110		
3,0 x 30 – 90		

Dimensions in cm

## COLOURS



Stainless steel



Black with anti-fingerprint coating



GEBERIT CLEANLINE80

# PERFECT FORM **AND SOLID CONSTRUCTION**



Classic stainless steel, on-trend in coloured metallic tones or discreet as a tile-bearing profile



Floor-even access for walk-in shower areas



No hidden channels to minimise dirt and bacteria deposits. The removable comb insert makes the drain easy to keep clean

Made from solid stainless steel, Geberit CleanLine80 shower channels reflect the trend towards coloured metal tones. The integrated slope and anti-fingerprint coating ensure water drains away quickly and make the channel easy to clean.



Classic or trendy: available in black chrome, champagne and brushed stainless steel.

- Modern linear design
- Easy to clean
- Range of designs for different bathroom styles

## COLOURS



Stainless steel



Black chrome



Champagne

## SIZES

4,4 x 30–130		
4,4 x 30–110		
4,4 x 30–90		

Dimensions in cm



The comb insert minimises clogging and is easy to remove and clean.



GEBERIT CLEANLINE60

# SLIM AND VERSATILE

The CleanLine60 shower channel is suitable for installation in very thin floorings, such as mosaic tiles and synthetic surfaces, thanks to the slim design of the flat stainless steel profile, which blends seamlessly into the floor and lends any shower area a minimalist, elegant appearance.



Classic look in stainless steel



Virtually step-free for fully tiled shower areas



No hidden channels to minimise dirt and bacteria deposits. The removable comb insert makes the drain easy to keep clean

CLEANLINE60 SIZES

4,7 x 30-90		
4,7 x 30-30		

Dimensions in cm

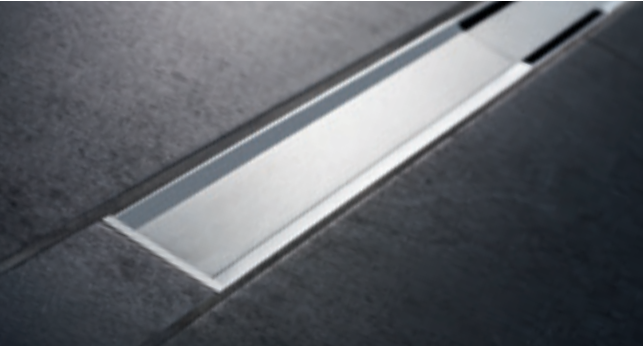


↑  
Geberit CleanLine60 for thin flooring.

- CleanLine60: slimmer design for flat floorings
- CleanLine20: flat design with minimal height offset in shower floors

GEBERIT CLEANLINE20 AND TILE-BEARING

The Geberit CleanLine20 shower channel easily integrates into shower floors thanks to its flat design, creating a floor-even shower area ideal for step-free, accessible installations. The brushed stainless-steel surface is both classically elegant and durable. Geberit CleanLine tile-bearing discreetly and elegantly integrates the drain into shower floors.



↑  
Geberit CleanLine20 in stainless steel. Geberit CleanLine20 in stainless steel.



↑  
The tile-bearing shower channel integrates almost invisibly into tiled shower areas.

CLEANLINE20 SIZES

4,3 x 30-160		
4,3 x 30-130		
4,3 x 30-110		
4,3 x 30-90		

Dimensions in cm

COLOURS

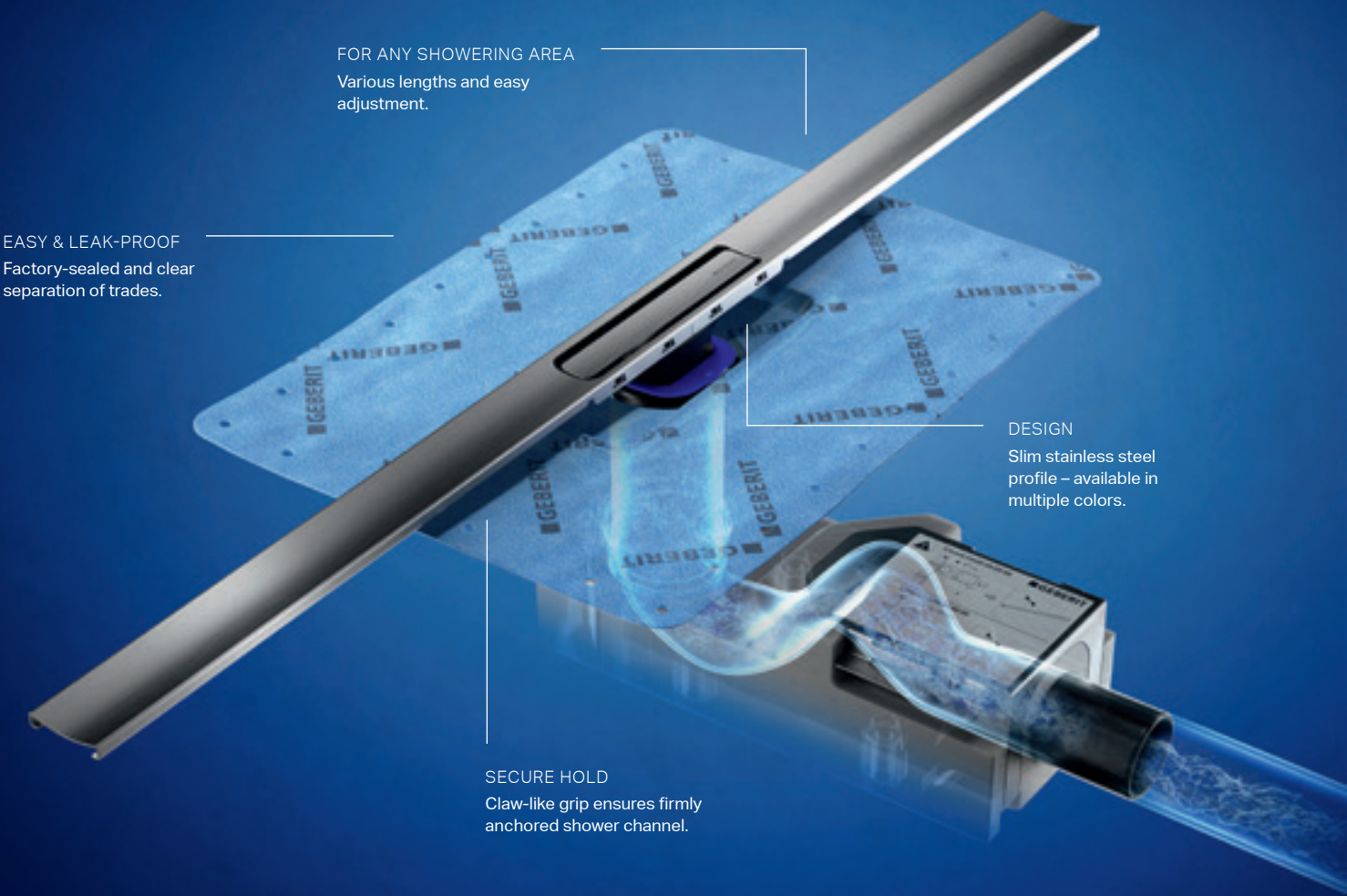


Stainless steel (CleanLine60 and CleanLine20)



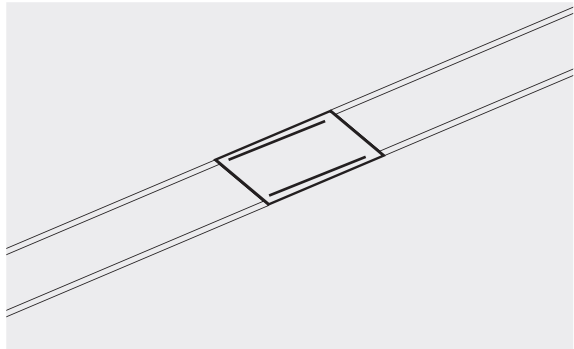
# ALL SET – NO SWEAT

The smart Geberit CleanLine installation system simplifies the plumber’s work and makes installation quick and simple.



The timeless linear design of shower channels makes them a great choice for both private and commercial bathroom customers. Geberit CleanLine shower channels offer a range of additional benefits. They are as easy to install as floor drains thanks to their sophisticated technical design. The profile can be integrated into the floor like a tile, which means even tilers can work well with Geberit CleanLine. The ends of each profile can be cut to length, making them easy to adjust to the requirements and measurements of any shower area.

- Classic, discreet, linear design
- Design options suitable for any interior style
- Unique construction with cover profile, central drain and comb insert
- Effortless installation thanks to complete installation set
- Reliable seal thanks to premounted sealing fleece, firmly injection-moulded at the factory
- Easy to adjust thanks to channel profiles that can be cut to length



↑ Connecting piece for communal showers makes it easy to install several shower channels seamlessly in a row.



↑ Sound-decoupled base unit to meet strict sound insulation requirements in buildings.



↑ Comb insert with hair trap helps prevent clogging.



↑ Profiles can be cut to length to suit different requirements.





# POINT AND WALL DRAINS

Geberit shower and wall drains combine a range of benefits, including aesthetic design, modern functionality, high discharge rate and reliable hygiene – perfect for contemporary and convenient bathroom design. Enjoy the comfort of a perfectly matched water guide and discover a wide range of attractive designs.



GEBERIT CLEANWALL

# CONSISTENTLY FLOOR-EVEN



Continuous floor tiling



Floor-even access for fully tiled shower areas



No interruption of the floor surface caused by the drain

Geberit CleanWall moves the drainage of floor-level showers from the floor to the wall. This gives shower areas an elegant and modern look, as the floor design can be completely uninterrupted.



↑  
The discreet wall drain is easy to keep clean.



↑  
You can also tile the Geberit CleanWall cover to match your bathroom design.

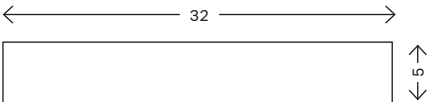


↑  
The optional collector profile can be mounted directly in front of the wall to create a slope towards the wall drain, collecting dirt and deposits that are easy to wipe away.



←  
A comb insert behind the design cover traps hair and is easy to remove for cleaning.

## SIZES



Dimensions in cm

- Innovative solution for integration in prewall systems
- Clear separation of trades thanks to pipe placement behind the wall
- Optional collector profile for efficient and precise formation of the slope in the floor

Geberit CleanWall allows shower surfaces and drainage to create the perfect seamless look. Floors can be designed without any channels or drains, making it ideal for accessible, step-free shower areas. Wall coverings in various colours, including stainless steel, plastic and tile-bearing options, provide freedom of design. Installation is easy because all the elements you need for water supply and drainage are located on one installation level.



↑  
Geberit CleanWall works perfectly with the Geberit GIS, Duofix and Kombifix installation systems.

## COLOURS

	White alpine
	Matt Black
	Bright chrome-plated
	Brushed stainless steel
	Polished stainless steel
	Profile for flush wall tiling



GEBERIT CLEANPOINT

# MINIMALIST WITH HIGH DISCHARGE RATE



Geberit CleanPoint is the classic solution for draining floor-even showers, offering an exceptional discharge rate with a flat trap structure and easy positioning thanks to its compact design with a grating area of just 8 x 8 cm.



All cover types

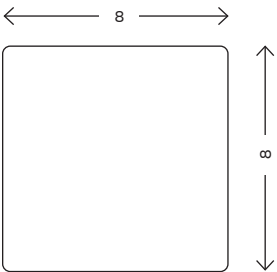
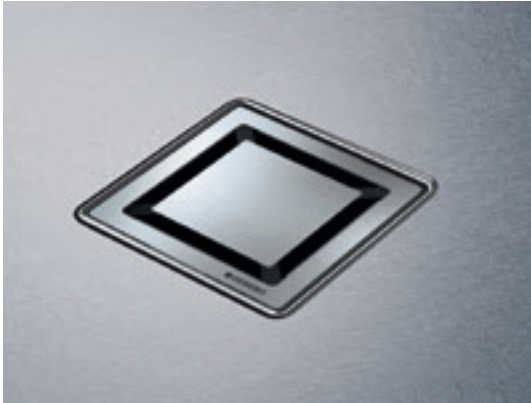
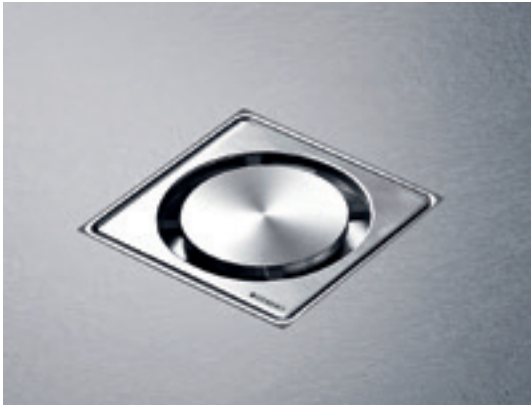


Various design covers



Step-free access for floor-even shower areas

The design cover of the shower floor drain is available in round and square versions and can be screwed on.  
↓

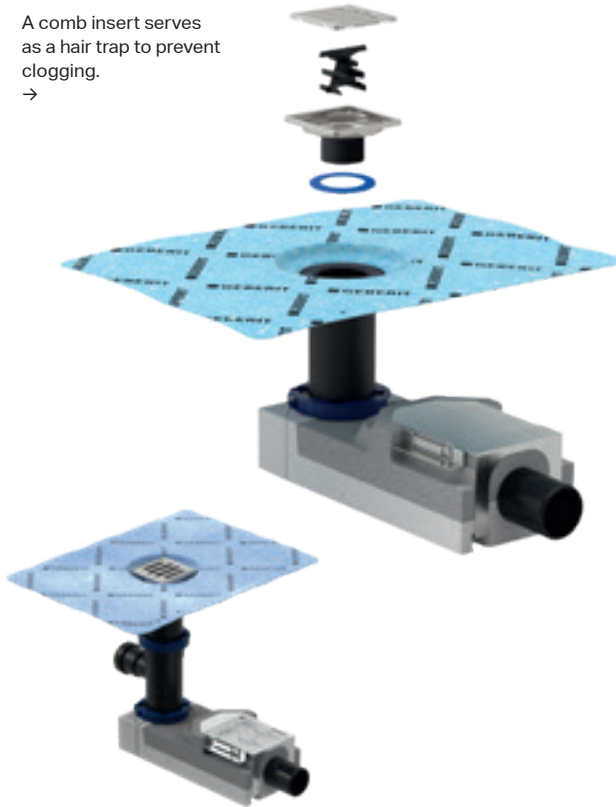


Dimensions in cm

- Intelligent details for simple installation
- Design grating made of solid stainless steel
- Compact structure
- Reliable seal with sealing foil injected at the factory

Geberit CleanPoint for showers sets itself apart thanks to its extremely compact design with a grating area of only 8 x 8 cm and exceptional functionality. The height, inclination and offset of the grating can be adjusted to suit the tile grid.

A comb insert serves as a hair trap to prevent clogging.  
→





GEBERIT NICHE STORAGE BOX WITH  
WALK-IN SHOWER PANEL

# EVERYTHING IN ORDER UNDER THE SHOWER



Walk-in shower panel without any bulky  
aluminium profiles



By using the prewall, the niche storage box  
creates additional storage space without  
restricting freedom of movement



No water or dirt residue in the niche storage box,  
as water can drain freely from the shelf surface

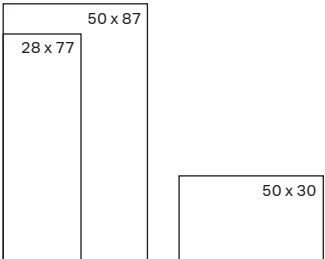


The Geberit niche storage box provides shelf  
surfaces without restricting freedom of movement  
underneath the shower. It allows water to drain off at  
the front, reliably preventing any build-up of residue.  
The Geberit walk-in shower panel is fastened to the  
prewall without any visible fittings or profiles, making  
the surfaces even easier to clean.

- Easy integration of niche storage box and walk-in shower  
panel into the prewall system
- Seamless integration into the planning and installation  
processes for the prewall system
- Quick and straightforward installation of the shower  
area.

The walk-in shower panel is held  
securely in place without any visible  
fittings.  
↓

## SIZES



Dimensions in cm



The niche storage box can be integrated into  
the wall design.



The mounting frame for the niche storage box is  
compatible with Geberit installation systems.



Insert the installation box into the mounting  
frame.



The premounted sealing fleeces are integrated  
into the sealing level.





# GEBERIT BATHTUBS

A full warm bath is synonymous with deep relaxation, tranquillity and a little luxury in everyday life. Whether you want to relax after a long day or enjoy an invigorating start to the morning, a bathtub is all about some me-time. Geberit brings this comfort into any home with bathtubs in a wide variety of shapes, sizes and designs. High quality, easy to clean and cleverly designed down to the last detail, Geberit bathtubs transform any bathroom into a personal oasis of well-being.



GEBERIT SOANA BATHTUB

# RELAXATION IN ALL ITS BEAUTY



Warm surface



Colour to match the ceramic



Durable, resistant material



Easy to clean



Low-maintenance – minor scratches  
can simply be buffed away



Low product weight



Sound and thermal insulation

With their soft organic design, the Geberit Soana bathtubs create a truly relaxing bathroom experience. The smooth surface not only helps keep the water warmer for longer but also enhances the feeling of well-being. The bathtub is available with the waste outlet either in the middle or at the narrow end. The slim design of the Geberit bathtub drain with PushControl actuation perfectly complements the exceptional comfort of the bathtub.

The slim surround of Geberit Soana blends seamlessly  
into built-in solutions.  
↓



Geberit rectangular bathtub, slim rim  
W 75 cm L 170 cm



Rectangular bathtub slim rim, duo  
W 80 cm L 180 cm  
W 90 cm L 190 cm



Drain cover and turn handle in a discreet and perfectly coordinated design.  
→



BATHTUB DRAIN

# FOR SAFE DRAINAGE



The new bathtub drain boasts a minimalist design and is also available with an integrated inlet. The tap aerator of the concealed inlet can be detached by hand and easily descaled. The actuator rosette and waste plug are available in white alpine, white with bright chrome-plated design ring, bright chrome-plated and black matt.



↑  
Bathtub drain with integrated inlet.



↑  
Drain opens and close with simple turn handle actuation.

## COVER COLOURS



White alpine



White/bright chrome-plated



Bright chrome-plated



Matt black

↑  
Hydraulically optimised trap with low installation height in all bathtub drains.  
↓





GEBERIT SET OF FEET FOR ACRYLIC BATHTUBS AND SHOWER TRAYS

# TOOL-FREE HEIGHT ADJUSTMENT



The Geberit set of feet makes it significantly easier to install and adjust the height of sanitary acrylic bathtubs and shower trays. The sophisticated design consists of crossbars, two floor crossbars and four plastic feet. The feet are clicked into the crossbar and manually adjusted to the correct height with screw connections. Even subsequent adjustments are very easy to make without the need for tools.

- Fast and easy installation
- Straightforward height adjustment with a large adjustable range
- Feet movable in the crossbar
- High bearing load of 150 kg per foot

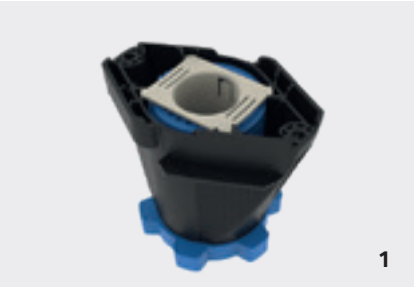


Bathtub feet  
90–210 mm

Shower tray feet  
60–120 mm



←  
The bathtub feet make height adjustment easy.



**1** A double thread in the tub feet makes height adjustment quicker and doubles the adjustable range. **2** The plastic feet can be moved in the crossbar, making it easier to find the optimum standing position on the surface. **3** The crossbars are covered with sound insulation tape at the factory to ensure the bathtub edge can be positioned precisely and securely against the wall. **4** Suitable wall anchors make it easier to achieve back-to-wall installation of bathtubs without gaps or subsequent movement.





**Geberit Southern Africa**  
06 Meadowview Ln  
Meadowview Business Estate  
Linbro Park  
ZA

(+27) 11 444 5070  
marketing.za@geberit.com

**[www.geberit.co.za](http://www.geberit.co.za)**