

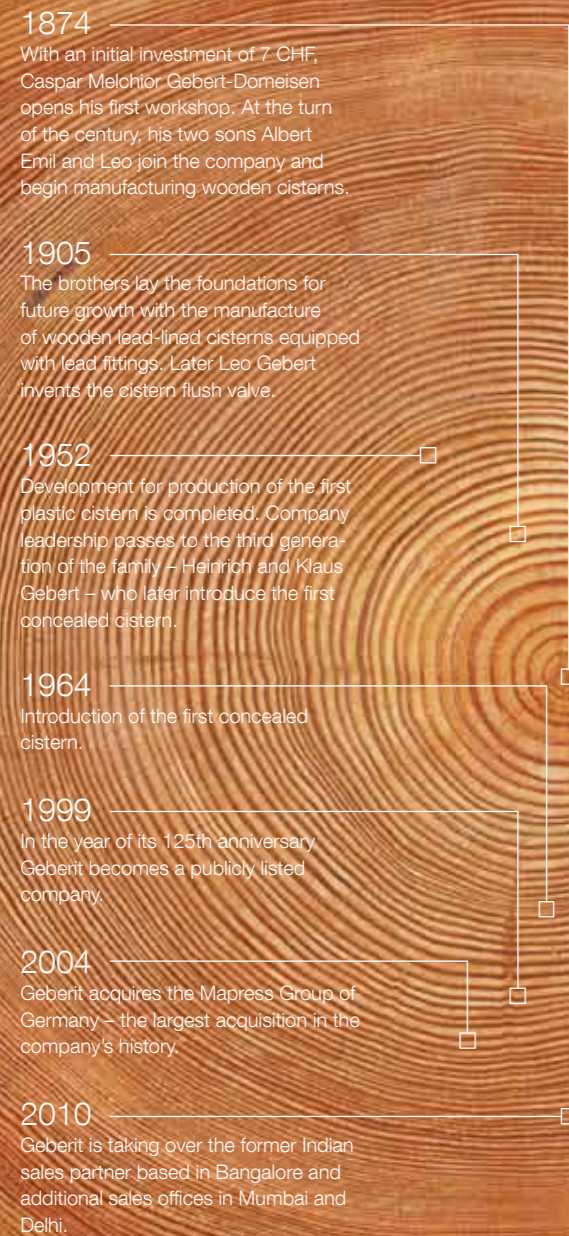
## Managing Waterflows



Geberit International Sales AG  
CH-8640 Rapperswil  
Switzerland

[sales@geberit.com](mailto:sales@geberit.com)  
[www.international.geberit.com](http://www.international.geberit.com)

Since the day it all began in 1874, we have been defined by our experiences



When Caspar Melchior Gebert began manufacturing wood and lead cisterns from his workshop, his intention was to improve the quality and performance of cisterns available at that time.

Today, Geberit is an international leader in sanitary technology.

Our success is not down to one individual, but to all of the over 5,600 employees in our worldwide network. Founded in Switzerland, today there are 15 production sites in 7 different countries. The main production sites are located in Switzerland, Germany and Austria.

For further information:  
[www.geberit.com](http://www.geberit.com)

## Do the same thing a million times, and people call you predictable

Many Geberit products are built into walls, ceilings and floors. Mistakes are not an option. We believe that reliability and dependability must be taken for granted by installers, planners, architects, builders and the end-user.

The Geberit concealed cistern boasts a seamless design, made from one piece of HDPE, which is then pressure tested to ensure it is absolutely watertight. We do this to prove their undeniable reliability. But above all we do it to ensure they live up to your and our expectations.

At several locations worldwide, we have installed “drainage towers”. These models simulate real installation situations and help us and sanitary professionals to understand the processes of drainage perfectly. The know-how we obtain supports our development of new products with our aim to support planners in optimising the design of drainage systems.



## Know-how puts sanitary professionals in the driving seat

Every year in training events throughout the world, Geberit helps approx. 30,000 sanitary professionals keep up to date with sanitary technology.

We take advantage of this two-way exchange of ideas and information. By this means we expand our resource of knowledge and broaden our know-how. We are well aware of that, if we are to continue to stay in the driving seat, we must always possess industry-leading know-how and develop new ideas and products.



## Our range – your inspiration

In total, our product range comprises seven lines, designed to fit together in complete solutions for both residential and non-residential installations:

- Installation systems
- Cisterns and mechanisms
- Taps and Flushing systems
- Geberit AquaClean
- Waste fittings and traps
- Building drainage systems
- Supply systems





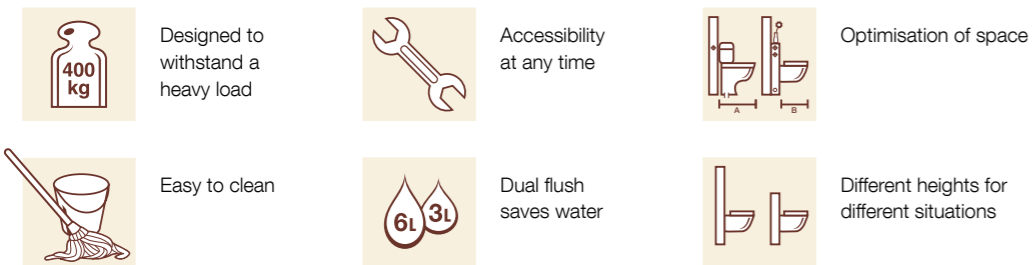
## Transform your bathroom with a concealed installation

With Geberit installation systems, the pipes, cistern and the connections are no longer visible but hide within the walls of the bathroom.

Concealed installations are more hygienic because they offer clean lines and clear surfaces. Therefore they are extremely easy to clean. The wall-hung toilet makes it possible to clean the entire floor beneath the toilet.

It is no longer water and drain connections that determine the position of the WC or urinal, but the optimal design and planning of the room. New partition walls and the wall-hung system give you a free rein with any bathroom design. A bathroom with concealed installations will feel more spacious than a conventional bathroom, showing elegant beauty from floor to ceiling.

### The benefits of a concealed installation



## The best solutions to create a modern bathroom

You will find the appropriate elements for WC, urinal, bidet or washbasin in our range of installation elements: Kombifix, Duofix, GIS or just the simple concealed cistern.

### Kombifix

Kombifix is the solution created especially for solid constructions. Over the years Geberit Kombifix has proven itself as a very reliable system for pre-wall installations. It has good noise reduction qualities, the highest functional reliability and is designed to carry weights up to 400 kg.



### GIS

The GIS system allows a quick and easy frame installation, which supports all kinds of sanitary ware from washbasins to toilets. With the GIS system there are no limits to creative opportunities. Regardless of whether it's a new building project or the modernisation of an existing bathroom. For example you can place the toilet against a new partition wall that is creatively dividing space.



### Duofix

The fastest installation solution is Geberit Duofix. It is a universal mounting frame for inside or in front of a dry wall, as well as in front of solid constructions. The self-supporting frame gives stability to the WC bowl. No bricks are needed.





## A perfect fit for a rock-solid result

The concealed cisterns by Geberit fit perfectly into any of the installation elements – irrespective of whether you decide for an installation with GIS, Duofix or Kombifix.

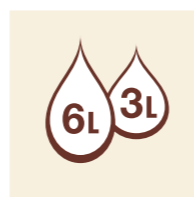
At Geberit, we make the installation job easy, efficient and safe: for example, Geberit concealed cisterns feature clip-in valves and hand-tightened water supply fittings.



The cistern itself is blow-moulded in one piece. This eliminates the risk of leakage, which is of course essential when using an in-wall installation. After removal of the actuator plate, the filling valve as well as the flush valve can be removed and easily replaced or adjusted without the use of tools.



Furthermore, the technology inside our cisterns allows you to adjust the flush volume and to flush with two different amounts of water. All Geberit cisterns feature water saving with dual flush or flush-stop functionality.



## Flush with style

Reliable and attractively designed, Geberit actuator plates come in different styles, flush options, colours and finishes to complement all kinds of bathroom design.

They offer functionality that will withstand being pushed time after time. And if you prefer a touch-free solution or remote actuation, an integrated infra-red sensor flushes the toilet. The remote control can be built into a hand rail to conveniently activate the flush.

### Dual flush saves water

Actuator plates for two different amounts of water are our contribution to water saving. Environmental protection is also good for the budget. The dual flush system, with

buttons for 3 or 6/9 litres of water, brings real water savings to every household.



**Sigma 50**  
Dual flush



**Sigma 20**  
Dual flush



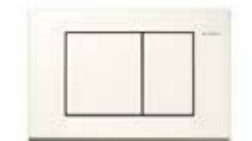
**Sigma 10**  
Single flush



**Samba**  
Dual flush



**Twist**  
Dual flush



**Bolero**  
Dual flush



**Delta50**  
Dual flush



**Kappa20**  
Dual flush



**Kappa50**  
Dual flush



## Innovation at it's best

### **A design solution for every problem**

Geberit Monolith is an elegant sanitary module for bathrooms with an integrated cistern that can be installed using existing connections and drains. Its clear, simple lines and highquality materials create a harmonious interaction between bathroom and ceramic pan.

### **Technology that lasts**

The technology inside the cisterns naturally has to live up to similar expectations as the outside: Each valve has to go through intensive endurance testing. In total, designs undergo up to a million test-runs. We do this to prove their undeniable reliability, so you can count on their high resistance to dirt particles in the water. Filling and flush valves by Geberit are also available for ceramic cisterns.

### **Two ways to save water and resources**

With the water-saving dual flush technology or the flush-stop function flushing the toilet becomes more environmentally friendly than ever before, saving you up to 60% in water consumption.



## Only pure water

**Geberit AquaClean shower toilets provide those who take special care over their personal hygiene with a unique sense of freshness and cleanliness.**

An everyday, convenient luxury you'll soon not want to live without.

### **The perfect model for every bathroom**

The comprehensive range of Geberit AquaClean shower toilets by Geberit includes various models – from a simple accessory for an existing toilet, to a complete highly-functional unit – for personal hygiene at the highest level. Every model is an example of luxurious comfort and convenient operation. In other words, total quality, innovation and design all come as standard.

Geberit AquaClean adaptable shower toilet seats are compatible with virtually any toilet, and installation is extremely easy.





## Flush with comfort

With touch-free technology, Geberit makes it possible to use public conveniences – whether using the toilet or just washing hands – without touching the taps or actuator plates. This enhances comfort, convenience, hygiene – and helps you save water.

Despite being equipped with sophisticated electronic components, Geberit touch-free systems are easy to integrate and can also be operated without being connected to the mains supply, via battery. Geberit touch-free technology is vandal-resistant and maintenance-free.

### Intelligent WC and urinal flushing

Take urinal and WC flushing, for example. Geberit HyTronic infra-red controls maintain maximum cleanliness by flushing immediately after each and every use. This ensures that the trap is always filled with fresh water and eliminates the need for fragrance blocks.

### Intelligent taps

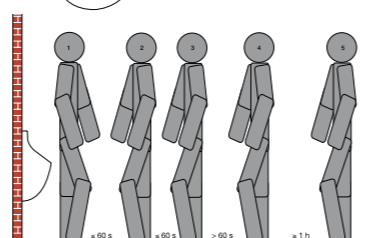
To complement the style of the flush actuators, Geberit also offers elegant infra-red and self-closing taps, which are available with or without a mixer facility, all keeping actual physical contact to a minimum.

### Save water

Another benefit of the intelligent touch-free technology is that the water only flows when actually needed – i.e. hands are detected under the tap or someone has just moved away from the urinal. The benefit is a significant reduction in the consumption of water that you will feel immediately. Urinal electronic controls feature programmable flushing sequences and time to find the optimal balance of hygiene and economy for any given set of circumstances.



Geberit infra-red electronic taps give the best user recognition.



Intelligent and programmable urinal controls.

## Aesthetics and functionality

In the range of siphon and drain traps, functionality and safety are the most important attributes.

### Looking inside

This is not all you may expect from traps by Geberit. All of them are easy to clean or actually self-cleaning. The Geberit washbasin trap conducts the water in a regular and direct stream to the outlet pipe via the integrated hydraulic element, while its automatic self-cleaning function ensures cleanliness at all times. The inspired design of the washbasin trap makes it compatible with any washbasin and every trap.



### Hidden from the eye

These products must be as unobtrusive as possible – with regard to design, function and, certainly, noise. We take these tasks seriously and develop designs that fit nicely into every bathroom – some of them are even invisible, like the concealed washbasin trap. Bathtub and shower traps feature extremely low and flat siphon bodies in order to save space and building height.



### The perfect finishing touch

The Uniflex shower channel is the perfect finishing touch for floor even showers. The channel is fixed to the floor with adjustable feet – no tools required – so that the channel can be installed efficiently and insulation layers laid tidily. The height, inclination and offset of the frame can be adjusted to suit the thickness and size of tiles, the incline and the tile grid. An other alternative solution to traditional wet room drainage is the new shower element from Geberit. It integrates the drainage into the wall, thus avoiding having to build into the floor. Now you can have all the benefits of Geberit know-how in the shower area.



### Bath for two – now more comfortable

The Uniflex PushControl embodies a new generation of bathtub drains. Thanks to the ultra-flat actuation, even the overflow is comfortable to lean against. With its sleek and elegant design it fits in with all modern bathtubs.





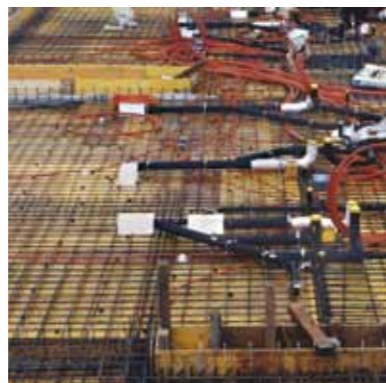
## Pipes and drains for any business

**Geberit provides total solutions for domestic, industrial and commercial applications. Where there's drainage, there's Geberit.**

The Geberit HDPE drainage system delivers optimal performance. The system pipes can be welded and guarantee not only high chemical, thermal and mechanical strength but are also absolutely watertight and possess an extraordinarily high longitudinal strength. Geberit HDPE pipes can even be installed in concrete.

### Prefabrication

Geberit HDPE is ideal for prefabrication. With the majority of work carried out in the workshop, the installation requires just a few simple connections on site. The light weight of HDPE pipes allows the transport of full assemblies from the workshop to where they are required.



### Components that make a whole

The range is completed by additional systems like the Geberit Sovent fitting for high-rise buildings, Silent-db20 fittings and ISOL insulation material for noise reduction, the Geberit Pluvia syphonic roof drainage system, floor drains and the appropriate fastening systems.

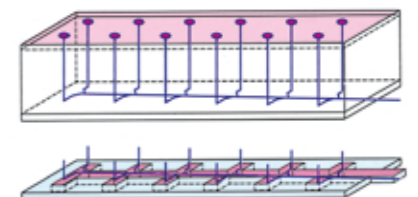
### Together for new ways in construction

These solutions within the Geberit drainage systems range enable planners and architects to go new ways in planning and development of drainage solutions. In order to benefit from all elements supplied, we at Geberit support the planning process. Another typical example of Know-How Installed.

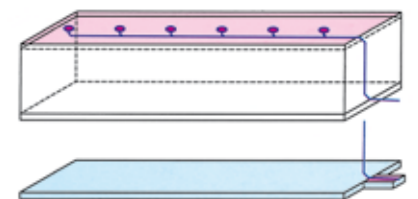


### Geberit Pluvia – effective even on the largest roofs

Based on the vacuum principle, the Geberit Pluvia syphonic roof drainage system offers incredible performance. The innovative roof drainage system can discharge up to 25 litres of rainwater per second per outlet. Geberit Pluvia is technically superior to traditional systems and represents greater value for money. Smaller pipe diameters are sufficient and a Pluvia system uses significantly fewer downpipes and less underground drainage. With traditional systems, rainwater flows to the street sewers partially filling the pipes on its way. But Geberit Pluvia is based on the pipes being completely filled, which automatically creates a vacuum in the downpipe that in turn triggers highly efficient suction.



Conventional



Geberit Pluvia



## Materials for all needs and applications

**In Geberit Mapress and Mepla supply systems, pipe joints and fittings are pressed rather than being screwed, welded or soldered as in the past.**

Geberit's press connections enable secure joints in minimal time – the fast, safe and clean alternative to traditional installation methods.

**Perfection down to the last detail**  
Press connection technology has become the industry standard for supply and service pipe installations. The components of the system – fittings, system pipes and pressing tools – guarantee durable, sealed joints.

Proven for decades and certified by numerous regulatory bodies, the Geberit press connection system sets the standard, in terms of both domestic and industrial applications.



## Sustainability – Geberit sets standards globally

**People have to think about sustainability today and act accordingly. Many claim that sustainability is a cost driver. But this is often a misunderstanding. Sustainable production is only more expensive initially. Our good position in the market also stems from our efforts to produce sustainable products ever more efficiently. Our energy and water consumption is continually falling and we are more economical with raw materials. This has a positive effect on our cost structure.**

Albert M. Baehny, Chief Executive Officer (CEO) in the Sustainability Report 2010 Geberit has been leading the sanitary sector in sustainability for decades and proves that economic growth and over the long term successful business activities are compatible with environmentally friendly, social action.

A growing population's rising consumption of energy and water is a major challenge for sustainable development. And this challenge is also the motivation for Geberit to offer the highest standards of environmental friendliness, resource saving and durability in its products. Success at the international level is also a matter of dialog. The demands on Geberit are manifold: Customers, suppliers and employees have their own concerns, while social issues and the environment also play an important role. Geberit relies on partnership in business relations and fairness in interaction with competitors and associations.